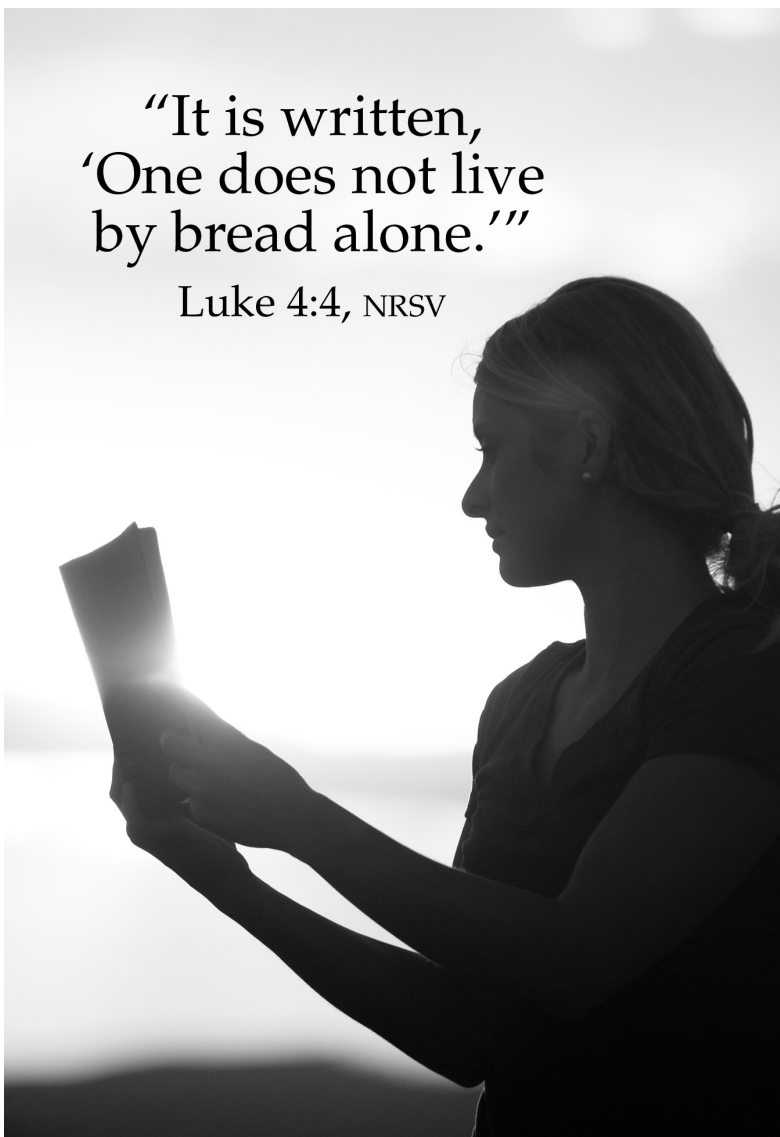


WELCOME TO WORSHIP!

“It is written,
‘One does not live
by bread alone.’”

Luke 4:4, NRSV



THE LORD DELIVERS US FROM SATAN'S CLUTCHES

The First Sunday in Lent

March 10, 2019

WELCOME TO WORSHIP

If you are a visitor to our church, we extend you a warm welcome. It's encouraging to see parents bring their families to worship the Lord. If your child is restless, you can use the Family Room to calm your child. Restrooms are located in the hallways along either side of the Worship Center. For those with special needs, large print copies of the service and listening devices are available from the ushers. One of our ushers or greeters can help you find the restrooms, family room or answer your other questions.

SERVICE NOTES FOR THIS SUNDAY

1 John 3:8 tells us that Jesus came into this world "to destroy the devil's work." We see him do just that today. Even more, Jesus stands by us and strengthens his people as they continue to wage war against the assaults of Satan and every evil. May he strengthen you today as you hear his Word!

The liturgical color¹ throughout the season of Lent is purple, which communicates somberness and quietness. This is fitting given Lent's somber focus on Jesus' sufferings and death.

COPYRIGHT INFORMATION

Scripture quotations marked (NIV84®) are taken from the HOLY BIBLE, NEW INTERNATIONAL VERSION ®. NIV®. Copyright © 1973, 1978, 1984 by Biblica, Inc.™ Used by permission. All rights reserved worldwide.

Hymns and liturgy marked CW can be found in the red hymnals in the pew racks, *Christian Worship: A Lutheran Hymnal*. Service of the Word. Words and Music. © 1993 Northwestern Publishing House. All rights reserved. Reprinted under OneLicense.net A-719903

"How Deep the Father's Love For Us." by Stuart Townsend. © 1995 Thankyou Music (Admin. by EMI Christian Music Publishing). All rights reserved. Used by permission: CCLI #145043

Psalm 91. From *Christian Worship: Occasional Services* © 2004 Northwestern Publishing House.

¹ The liturgical color is found on the pastor's stole and the piece of cloth hanging from the pulpit.

SERVICE OF THE WORD

Service of the Word draws the believer's attention to the proclamation of the Gospel in the Word of God.

WELCOME

OPENING HYMN

Savior When in Dust to You | CW 124

Please stand.

CALL TO WORSHIP

The Call to Worship reminds us that we gather to worship the one, true, triune God of the Bible.

Minister (M): The grace of our Lord Jesus Christ and the love of God and the fellowship of the Holy Spirit be with you all.

Congregation (C): And also with you.

CONFESSION OF SINS

M: We have come into the presence of God, who created us to love and serve him as his dear children. But we have disobeyed him and deserve only his wrath and punishment. Therefore, let us confess our sins to him and plead for his mercy.

C: Merciful Father in heaven, I am altogether sinful from birth. In countless ways I have sinned against you and do not deserve to be called your child. But trusting in Jesus, my Savior, I pray: Have mercy on me according to your unfailing love. Cleanse me from my sin, and take away my guilt.

M: God, our heavenly Father, has forgiven all your sins. By the perfect life and innocent death of our Lord Jesus Christ, he has removed your guilt forever. You are his own dear child. May God give you the strength to live according to his will.

C: Amen.

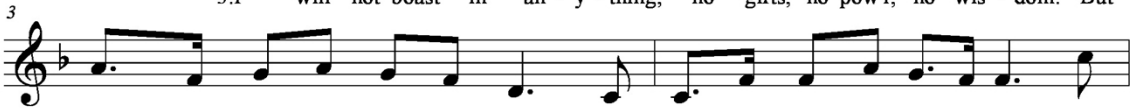
PRAYER AND PRAISE

M: In the peace of forgiveness, let us praise the Lord.

How Deep the Father's Love



1. How deep the Fa - ther's love for us, how vast be - yond all meas - ure, that
2. Be - hold the Man up - on a cross, my sin up - on His shoul - ders. A -
3. I will not boast in an - y - thing; no gifts, no pow'r, no wis - dom. But



He should give His on - ly Son to make a wretch His treas - ure. How
shamed I hear my mock - ing voice call out a - mong the scof - fers. It
I will boast in Je - sus Christ, His death and res - ur - rec - tion. Why



great the pain of sear - ing loss; the Fa - ther turns His face a - way as
was my sin that help Him there un - til it was ac - com - plished; His
should I gain from His re - ward? I can - not give an an - swer. But



wounds which mar the Cho - sen One bring man - y sons to glo - ry.
dy - ing breath has brought me life. I know that it is fin - ished.
this I know with all my heart; His wounds have paid my ran - som!

PRAYER OF THE DAY

Drawing from the themes in today's Gospel reading, the Prayer of the Day asks God for mercy, blessing, and aid in living the Christian life.

M: Let us pray.

Lord our strength, the battle of good and evil rages within and around us, and our ancient foe tempts us with his deceits and empty promises. Keep us steadfast in your Word, and when we fall, raise us up again and restore us through your Son, Jesus Christ our Lord who lives and reigns with you and the Holy Spirit, one God, now and forever.

C: Amen.

Please be seated.

The Word

FIRST LESSON

1 Samuel 17:4-11, 32-40, 45-49

The LORD delivers David from the clutches of Goliath.

M: The Word of the Lord.

C: **Thanks be to God!**

PSALM OF THE DAY

Psalm 91

Pastor introduces the refrain, then all repeat the refrain and sing it where indicated.

Refrain

Keep me, keep me as the ap - ple of your eye.

Hide me, hide me in the shad-ow of your wings.

Pastor sings the verses of the psalm.

Pastor: He who dwells in the shelter of the / Most High*

Will rest in the shadow of the Al- / mighty.

I will say / of the LORD,*

“He is my refuge and my fortress, my God, in / whom I trust.”

Surely he will save you from the / fowler’s snare

And from the deadly / pestilence.

He will cover you with his feathers,

and under his wings you will find / refuge;

his faithfulness will be your shield and / rampart

Congregation: Keep me, keep me as the apple of your eye.

Hide me, hide me in the shadow of your wings.

Pastor: You will not fear the terror of night,

nor the arrow that / flies by the day,

nor the pestilence that stalks in the darkness,

nor the plague that destroys at / midday.

A thousand may fall at your side,
Ten thousand at / your right hand,
But it will not come / near you.

**Congregation: Keep me, keep me as the apple of your eye.
Hide me, hide me in the shadow of your wings.**

Pastor: If you make the Most High your dwelling –even the LORD,
who is my / refuge--
then no harm will befall you, no disaster will come / near your tent.
For he will command his angels concerning you
to guard you in / all your ways;
they will lift you up in their hands,
so that you will not strike your foot a- / gainst a stone.

Pastor: Glory be to the Father and / to the Son*
and to the Holy / Spirit,
as it was in the be- / ginning,
is now, and will be forever. / Amen.

**Congregation: Keep me, keep me as the apple of your eye.
Hide me, hide me in the shadow of your wings.**

SECOND LESSON

Hebrews 4:14-16

Through Jesus' victory, we can approach God with confidence.

M: The Word of the Lord.

C: Thanks be to God!

VERSE OF THE DAY

M: It is written: "Worship the Lord your God,

C: and serve him only." (Matthew 4:10)

All three readings are thematically tied to the Gospel of the Day. We stand for the Gospel in order to honor our Lord.

Please stand.

GOSPEL

Luke 4:1-13

Jesus defeats the devil for us.

After the Gospel, the announcement is made:

M: This is the Gospel of the Lord.

C: Thanks be to God.

CHILDREN'S MESSAGE

The children are invited to come forward for an object lesson.

HYMN

*A Mighty Fortress Is Our God | CW 200
Contemporary Piano Setting*

SERMON - HOW TO DEFEAT THE POWER OF THE DEVIL

1. RECOGNIZE HIS TRICKS
2. USE GOD'S WORD

Please stand.

CONFESSION OF FAITH

Apostles' Creed

Everyone: I believe in God, the Father almighty, maker of heaven and earth.

I believe in Jesus Christ, his only Son, our Lord, who was conceived by the Holy Spirit, born of the virgin Mary, suffered under Pontius Pilate, was crucified, died, and was buried. He descended into hell. The third day he rose again from the dead. He ascended into heaven and is seated at the right hand of God the Father almighty. From there he will come to judge the living and the dead.

I believe in the Holy Spirit, the holy Christian Church, the communion of saints, the forgiveness of sins, the resurrection of the body, and the life everlasting. Amen.

Be seated.

THANK OFFERING

St. Paul's members offer their first and their best to their Savior in order to support the sharing of the Gospel through our church and our worldwide church body, the WELS. Our guests do not need to feel obligated to participate. We ask that everyone, guests and members, sign the Friendship Register which will be passed out during the offering.

If the gospel message has moved you to give and you would like an electronic option, you can scan this QR code with your mobile phone. It will connect you with our website's giving page.



MUSICAL OFFERING

How Deep the Father's Love for Us

Please stand.

PRAYER OF THE CHURCH

M: Heavenly Father, you loved the world and gave your Son to liberate us from sin and death by his obedient death on the cross.

C: We confess that without your love we are lost.

M: Lord of the Church, we thank you for the treasure of the gospel. By your Spirit, keep our eyes fixed on Jesus, the author and perfecter of our faith.

C: Strengthen our determination to do what pleases you, no matter what the danger or the cost.

M: We pray for those who carry a cross in the name of Christ and face ridicule and persecution for the sake of the kingdom: missionaries and chaplains, young people who stand up for what is right in the face of pressure to do what is wrong, and all who pay a high price for their faith and their values as Christians.

C: By your Spirit, O Lord, grant them patience and endurance.

M: We pray for those who carry heavy burdens in life: the sick and the chronically ill, the depressed and the lonely, those torn by conflict in personal relationships, those victimized by war and injustice, and all who face the terrors of life with a heavy burden.

C: Grant them peace, O Lord, and in your mercy, be their guardian and friend, their comfort and hope.

M: We pray for those who care for others: pastors and counselors; physicians and nurses; social workers and caring friends; all who feed the hungry, comfort the hurting, and stand beside the dying.

C: Strengthen them in their work, O Lord, and do not let them become weary in doing good.

Special Prayers and intercession may follow.

M: Hear us, Lord, as we bring you our private petitions.

Silent prayer.

M: Help us run with perseverance the race marked out for us. Keep us faithful even to the point of death, that we may receive the crown of life, through Jesus Christ, our Lord.

C: Amen.

THE LORD'S PRAYER

Our Father in heaven, hallowed be your name, your kingdom come, your will be done on earth as in heaven. Give us today our daily bread; forgive us our sins, as we forgive those who sin against us; lead us not into temptation, but deliver us from evil. For the kingdom, the power, and the glory are yours now and forever. Amen.

Be seated.

HYMN

Jesus, My Great High Priest | CW 359

CLOSING PRAYER

M: Let us pray together.

C: Almighty God, grant to your Church the Holy Spirit and the wisdom that comes from above. Let nothing hinder your Word from being freely proclaimed to the joy and edifying of Christ's holy people, so that we may serve you in steadfast faith and confess your name as long as we live, through Jesus Christ, our Lord, who lives and reigns with you and the Holy Spirit, one God, now and forever. Amen.

The blessing of Aaron (Numbers 6:24-26) has been spoken over God's people for over 3,500 years.

BLESSING

M: The Lord bless you and keep you.

The Lord make his face shine on you and be gracious to you.

The Lord look on you with favor and (+) give you peace.

C: Amen.

CLOSING HYMN

When in the Hour of Utmost Need | CW 413

WELS CONNECTION



TAKE HOME QUESTIONS

1. Compare and contrast the temptation of Jesus with the temptation of Eve in the Garden of Eden (Genesis 3:1-5). What do you learn about the devil from comparing those two accounts?

2. Make a list of specific ways through which Satan has tried to trick you throughout your life. Use these three different categories:
 - 1) Sowing seeds of doubt

 - 2) Telling an outright lie

 - 3) Twisting Scripture to suit his purpose.

3. There's obviously not a Bible passage for each exact situation. However, what do you know about God's Word that still makes it so helpful for you, no matter the circumstances? Hebrews 4 might be of some assistance.

4. Read 1 Samuel 16-18. Take note of the ways God shows he can be trusted in these chapters. How do David's plights compare to your everyday dilemmas? Bringing to mind other things you know about David's life, what can you take away from David's story concerning God's grace and protection?

NEWS & ANNOUNCEMENTS



THIS SUNDAY'S BIBLE STUDY

For What It's Worth – Led by Principal John Mello
Join us in the cafeteria from 9:15 to 10:15 a.m.

NEW BULLETIN FOR ELEMENTARY-AGE CHILDREN

You may have noticed that we removed the Youth Worship Questions from the service folder. In place of those, we are providing a separate sheet called “**My Worship Notes.**” These sheets contain questions to help keep your elementary-age child engaged in worship. There are three different versions on colored paper. You can choose the one that works best for your child, or take a different one each week. My Worship Notes are available in the tract rack near the left entrance to the worship space.

KEEPING YOUR PRESCHOOLER BUSY

We will continue to provide the **Children's Worship Bulletin**, which is appropriate for preschoolers. These are available from the ushers as you enter church. We also have “**Quiet Bags**” containing items that will keep them busy during church. Most contain a coloring book & crayons, a storybook, and a toy. These are available in the Resource Center.

OPEN FORUMS NEXT SUNDAY

March 17 | 9:15 & 11:45 a.m.

Next Sunday, we will revisit some key aspects of the calling process. Open forums will be held after each service (around 9:15 and 11:45). We will discuss the doctrine of the call and what we are looking for in an associate pastor. We hope to provide clearer answers as to why we are moving forward with calling a second pastor. Please be ready to share your comments and questions.

LENT & EASTER CONCERT AT NLHS

March 10 | 3:00 p.m.

Some of our grade school students will perform in the concert at Northland Lutheran High School. The concert features the high school's band and choir. Bring your music-loving friends. Refreshment will be served after the concert.

FOLLOW ALONG WITH THE READINGS

Paper copies of the scripture readings are available from the ushers or borrow one of our bibles from the rack in the Welcome Center.

ORDER FLOWERS FOR EASTER

If you wish to beautify church for Easter by purchasing one (or more) of the listed Easter flowers, please sign up on the flower chart located in the Welcome Center. Take an envelope, fill it out, place payment inside, and drop the envelope in the offering plate or turn into the church office. Plants can be picked up after the 2nd service on Easter Sunday or the following Tuesday. If you have any questions, please contact Veronica Klish at (715)421-3607. Deadline to order Easter flowers is Palm Sunday, April 14th.

6" Easter lily (6-8 blooms)	\$18.50
7" double Easter lily (2 plants per pot/12-16 blooms)	\$28.00
8" triple Easter lily (3 plants per pot/18-24 blooms)	\$36.00
6 ½" daisy mum – white, lavender, yellow, rainbow	\$26.00
6" purple, white, pink tulips (3 bulbs per pot)	\$20.00
6 ½" potted palm	\$29.50
6 ½" china doll	\$29.50
6 ½" peace lily (spath)	\$29.50
6" daffodils	\$20.00
6" white, pink, blue, purple hyacinths (3 bulbs/pot)	\$20.00
6" pink, blue, white hydrangeas	\$39.00
6 ½" yellow kalanchoe	\$25.00
6" white, rosy, pink azaleas	\$30.00



PART-TIME CHILDCARE POSITION AVAILABLE

Little lambs is in need of a person(s) to help with before and after-school care. The hours are Monday-Friday 6:30-8:00 a.m. and 3:00-5:45 p.m. These hours are approximate and can be very flexible depending on your schedule. The hours could also be shared with another worker. Summer hours may also be available. For more information, please contact our director, Carole Melso at littlelambs@stpaulswer.org or 715-421-3634 ext. 15.

LOCK-IN FOR TEENS AT NLHS

March 15 | 7:00 p.m.

Teens in grades 7-10 are invited to Northland Lutheran high School (NLHS) for a night of fun. There will be games, movies, food, and more. See the Ministry Table in the Welcome Center for more details. **Both public and private** school students are welcome.

Join us for Midweek Lenten Service
Wednesdays at 3:35 & 6:30 p.m.

MEAL HELPERS – THIS WEEK K-O

March 13 | 4:30-6:00 p.m.

To spread out the work involved in our fellowship suppers, we ask that all members pitch in to help. We've divided the congregation into three teams with each team serving twice during Lent. There is set-up, serving, and clean-up work to be done before, during, and after the meal, so help as it fits your schedule. If your last name begins with the letters K-O, please help this Wednesday, March 13.

MLC CHOIR IN WAUSAU

March 22

The Choir from Martin Luther College of New Ulm, MN is on tour this March. On March 22, they will have two performances in the Wausau area. At 12:45 p.m. they will be at Northland Lutheran High School. That evening at 7:00 p.m., they will be at St. Peter Lutheran Church – their Schofield campus. You are welcome to attend either performance.

FEBRUARY SCRIP REPORT

In February, families earned \$138.22 toward tuition at St. Paul's School by using scrip for everyday purchase. Another \$357.43 was earned by others, who directed their earnings to the general operation of the school.

GIFT FROM THRIVENT CHOICE

We recently received a gift of \$736 through the Thrivent Choice Program. Thank you to Thrivent Financial and all of their members. If you own a Thrivent product, please check whether you can participate in directing Choice Dollars to the ministries of our church. The extra funds are a real blessing.

ATTENDANCE & OFFERING REPORT

Last week's attendance: 245 Year-to-date average attendance: 239

From July 1, 2018 to March 1, 2019

Actual gifts to ministry: \$ 662,206

Actual cost of ministry: \$ 692,704 Mortgage Balance \$ 1,558,159

UPCOMING EVENTS

- Mar. 16 Pioneer Basketball Tournament in Schofield
- Mar. 17 Open Forum on the Call
- Mar. 18 Willing Workers
- Mar. 22 MLC Choir Concert in Wausau



FROM THE BOARD OF MISSION OUTREACH

I had planned on addressing you in person earlier, however weather changed that plan. As we have promised to keep you informed and updated on Outreach, I'd like to share more of our vision for ministry.

To have a vibrant outreach program, the Board must be adaptable to what windows our Lord opens for us. Laurie Meister has been very active in Youth Outreach efforts. There are other mission fields to cultivate in our community. As you will note we use the term TEAM. Each effort is designed to be a short-term ministry with leaders who have the heart for the task.

- Elderly Outreach Team – Today there are 37 elderly facilities in our community a field ripe for ministry.
- Social Media Team – Today social media is a platform for a broader spectrum of messaging.
- Visitor and New Member Team – Provide for initial assimilation of those new to St Paul's. Coordinate how visitors are met and greeted. We envision this being a joint effort between Outreach, Worship and Fellowship, to include follow up and assistance.
- Marketing and Branding Team – Develop a single marketing message. Look at the relevance of the mission statement and the direction of the church. Look at the logo and whether or not it displays the message.
- Christ Ambassadors Team – A team whose purpose will be to provide members with tools to be an ambassador for Christ.

Outreach teams provide the means by which ministry will be advanced in St Paul's. Those listed above are not the only ones envisioned. However, they are the start of a ministry plan to grow the Kingdom in our community. To accomplish these and more, we need more willing hands and hearts. The Board asks you to become a member of this ministry. Please contact me at 715-323-4566 or facjac@charter.net.

We each have a part of the Commission Christ placed before us. Through Him all is possible.

Fred Camacho

Chairman, St. Paul's Outreach Mission Board



CALENDAR

March 10-17

SUNDAY	8:00 AM	Worship
	9:15 AM	Bible Study in the Dining Room
	9:15 AM	Sunday School (grades K-5)
	10:30 AM	Worship
	2:00 PM	Adult Co-ed Volleyball in the gym
	3:00 PM	Lent & Easter Concert at NLHS
MONDAY	6:30 PM	Board of Outreach in the Resource Center
TUESDAY	6:45 AM	Men's Bible Study at From the Ground Up Coffee Shop
	9:45 AM	Women Walking in the Word in the Resource Center
	6:30 PM	Board of Lutheran Education in the Resource Center
WEDNESDAY	9:00 AM	School Chapel Service
	3:35 PM	Midweek Lenten Service
	4:30 PM	Lenten Supper in the cafeteria (Helpers K-O)
	6:30 PM	Midweek Lenten Service
	7:30 PM	Catechism Class (grades 6-8) in the Bible Study Room
	7:30 PM	Choir Practice in the balcony
THURSDAY	7:00 AM	Men's Small Group at From the Ground Up Coffee Shop
	2:00 pm	Hafermann Singers at the Atrium Care Center
	5:30 PM	Handbell Practice in the balcony
	6:30 PM	A People Close to God in the Bible Study Room
	6:30 PM	Men's Devotionals Basketball in the gym
SUNDAY	8:00 AM	Worship
	9:15 AM	Open Forum on the Call
	9:15 AM	Sunday School (grades K-5)
	10:30 AM	Worship
	11:45 AM	Open Forum on the Call
	2:00 PM	Adult Co-ed Volleyball in the gym
	6:30 PM	Leadership Council in the Bible Study Room





www.stpaulswr.org

311 14th Ave S | Wisconsin Rapids, WI 54495 | 715-421-3634 | churchoffice@stpaulswr.org
Pastor Lucas Proeber | 989-780-3184 | pastorproeber@stpaulswr.org